

**MODEL / MODEL**

RUBERG EH 40

**RODZAJ POMPY / PUMP TYPE**

nisko i wysokociśnieniowa / combined normal and high-pressure pump

**MATERIAŁ / MATERIAL**

stop aluminium, brąz (korpus pompy), stal nierdzewna (wał) / aluminium alloy, bronze (pump casing), stainless steel (shaft)

**NISKIE CIŚNIENIE / NORMAL PRESSURE  
WYDAJNOŚĆ / OUTPUT**

jednostopniowa pompa odśrodkowa / single-stage centrifugal pump  
4.000 l/min @ 10 bar

**NASADA WYSOKOCIŚNIENIOWA / HIGH  
PRESSURE OUTPUT  
WYDAJNOŚĆ / OUTPUT**

wielostopniowa, odśrodkowa / multistage centrifugal pump  
400 l/min @ 40 bar

**WYSOKOŚĆ SSANIA / SUCTION HEIGHT**

3 m

**USZCZELNIENIE WAŁU / SHAFT SEALING**

bezobsługowe uszczelnienie mechaniczne / maintenance-free mechanical sealing

**RODZAJ NASAD SSAWNYCH / TŁOCZNYCH /  
TYPE OF INLETS / OUTLETS**

DN 150 / DN 125 + 2xDN 32 (HP)

**AUTOMATYCZNA POMPA SAMOZASYSAJĄCA /  
AUTOMATIC PRIMING PUMP**

dwumembranowa napędzana poprzez wał pompy / two-membrane, driven by the pump shaft

**MODEL DOZOWNIKA / FOAM MIXER MODEL**

RUBERG RFS 240

**MASA / MASS - ALUMINIUM/BRONZE**

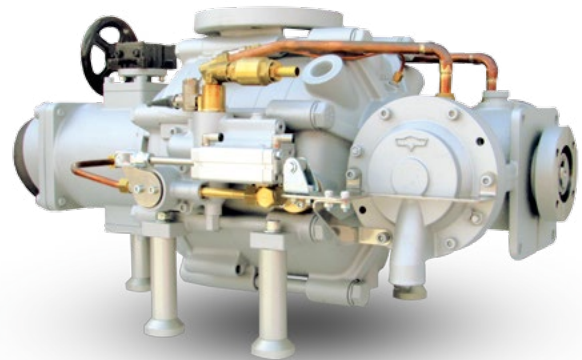
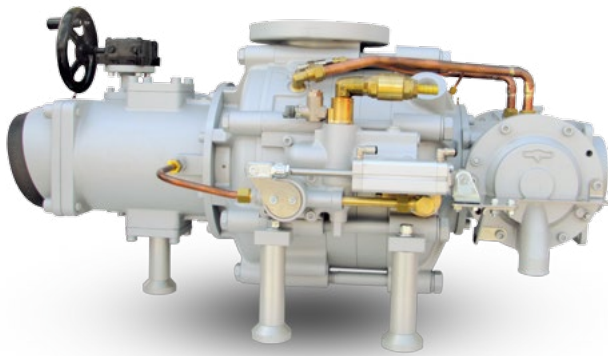
90 kg/203 kg

**WYMIARY POMPY / PUMP SIZE**

EN 1028 FPN 10-4000 / FPH 40-250

\* jako opcja / as an option

Powyższe parametry należy traktować jako orientacyjne. Dokładna kompletacja wykonywana jest na podstawie wymagań użytkownika.  
The parameters mentioned above should be treated as approximate. A detailed specification is prepared on the basis of a user's requirements.



**SS-EN**  
**ISO 14001: 2004**

WYDANE PRZEZ BUREAU VERITAS CERTIFICATION, CO OZNACZA, ŻE PRACUJEMY ZGODNIE Z POWYŻSZYMI STANDARDAMI.  
ISSUED BY BUREAU VERITAS CERTIFICATION, CONFIRMING THAT WE WORK IN ACCORDANCE WITH THE ABOVE STANDARDS.



**SS-EN**  
**ISO 9001: 2008**

WYDANE PRZEZ BUREAU VERITAS CERTIFICATION, CO OZNACZA, ŻE PRACUJEMY ZGODNIE Z POWYŻSZYMI STANDARDAMI.  
ISSUED BY BUREAU VERITAS CERTIFICATION, CONFIRMING THAT WE WORK IN ACCORDANCE WITH THE ABOVE STANDARDS.



ZGODNY Z NORMĄ EN 1028 / CERTIFIED ACCORDING TO EN 1028

### W. RUBERG RATING CHART FOR FIRE FIGHTING PUMPS

| RATED CAPACITY @ 3 METER LIFT [LITER/MIN] | RATED CAPACITY @ 3 METER LIFT [LITER/SEC] | PRESSURE [BAR] | POWER [KW] | IMPELLER SPEED [RPM] | TORQUE DIRECT DRIVE [Nm]  | TORQUE WITH RATIO 1.21 [Nm] | TORQUE WITH RATIO 1.61 [Nm] | TORQUE WITH RATIO 2.19 [Nm] | TORQUE WITH RATIO 2.74 [Nm] | SUCTION HOSE DIAMETER [MM] |
|---|---|----------------|------------|----------------------|---------------------------|-----------------------------|-----------------------------|-----------------------------|-----------------------------|----------------------------|
| 500                                       | 4   | 10             | 10         | 5600                 | RUBERG PUMP MODEL H5      |                             |                             |                             |                             | 75                         |
|   | 8   | 10             | 18         | 6800                 | HYDR. X                   | X                           | X                           | X                           |                             |                            |
| 900                                       | 15  | 10             | 33         | 5900                 | RUBERG PUMP MODEL R9      |                             |                             |                             |                             | 90                         |
|   | 10  | 15             | 32         | 6800                 | 14 X                      | 17 X                        | 23 X                        | 31 X                        | 39 X                        |                            |
| 1200                                      | 20  | 10             | 42         | 5600                 | RUBERG PUMP MODEL R18     |                             |                             |                             |                             | 110                        |
|   | 17  | 15             | 53         | 6100                 | 71 X                      | 86 X                        | 115 X                       | 156 X                       | 196 X                       |                            |
| 1500                                      | 25  | 10             | 57         | 4800                 | RUBERG PUMP MODEL R20     |                             |                             |                             |                             | 110                        |
|   | 17  | 15             | 53         | 4800                 | 114 X                     | 138 X                       | 184 X                       | 250 X                       | 313 X                       |                            |
| 2000                                      | 33  | 10             | 68         | 4100                 | RUBERG PUMP MODEL R30     |                             |                             |                             |                             | 110                        |
|   | 50  | 5              | 73         | 4100                 | 159 X                     | 193 X                       | 256 X                       | 349 X                       | 436 X                       |                            |
| 2400                                      | 40  | 10             | 84         | 4300                 | RUBERG PUMP MODEL R30     |                             |                             |                             |                             | 110                        |
|   | 45  | 8              | 85         | 4300                 | 186 X                     | 225 X                       | 300 X                       | 408 X                       | 510 X                       |                            |
| 2800                                      | 50  | 10             | 87         | 4300                 | RUBERG PUMP MODEL R40     |                             |                             |                             |                             | 150                        |
|   | 33  | 12             | 88         | 4400                 | 193 X                     | 233 X                       | 310 X                       | 422 X                       | 528 X                       |                            |
| 3000                                      | 60  | 10             | 95         | 4400                 | RUBERG PUMP MODEL R40     |                             |                             |                             |                             | 150                        |
|   | 33  | 15             | 110        | 4800                 | 191 X                     | 232 X                       | 308 X                       | 419 X                       | 525 X                       |                            |
| 4000                                      | 67  | 10             | 114        | 2500                 | RUBERG PUMP MODEL R280    |                             |                             |                             |                             | 150                        |
|   | 83  | 8              | 118        | 2500                 | 435 X                     | 527 X                       | 701 X                       | 953 X                       | 1193 X                      |                            |
| 6000                                      | 100                                       | 10             | 175        | 2800                 | RUBERG PUMP MODEL R280    |                             |                             |                             |                             | 150                        |
|   | 42  | 15             | 130        | 2800                 | 449 X                     | 544 X                       | 724 X                       | 984 X                       | 1231 X                      |                            |
| 8000                                      | 133                                       | 10             | 225        | 2200                 | RUBERG PUMP MODEL R 2-350 |                             |                             |                             |                             | 2 x 150                    |
|   | 67  | 15             | 183        | 2200                 | 597 X                     | 722 X                       | 961 X                       | 1307 X                      | X                           |                            |
| 10000                                     | 167                                       | 10             | 294        | 1900                 | RUBERG PUMP MODEL R 3-350 |                             |                             |                             |                             | 3 x 150                    |
|   | 125                                       | 15             | 270        | 1900                 | 444 X                     | 537 X                       | 714 X                       | 972 X                       | 1216 X                      |                            |

X - niezalecane lub niedostępne / X - not recommended or not available



[www.facebook.com/isswawrzaszek](http://www.facebook.com/isswawrzaszek)

**GRUPA WISS / WISS GROUP**

**WISS**

**POLSKA / POLAND**  
43-300 Bielsko-Biała,  
ul. Leszczyńska 22  
tel. +48 33 82 70 800  
biuro@wiss.com.pl  
www.wiss.com.pl

**F. M. „Bumar - Koszalin”**

**POLSKA / POLAND**  
75-842 Koszalin,  
ul. Lechicka 51  
tel. +48 94 342 20 35+39  
info@bumar.pl  
www.bumar.pl

**W. RUBERG AB**

**SZWECJA / SWEDEN**  
289 73 IMMELN,  
Skarviksvägen 13  
tel. +46 44 20 27 50  
info@ruberger.se  
www.ruberger.se

**WISS Thoma**

**NIEMCY / GERMANY**  
Im Maria Sand 1  
D-79336 Herbolzheim  
Tel: +49 7643 / 933 69 - 0  
info@thoma-feuerwehrfahrzeuge.com  
www.wiss-deutschland.de

**WISS CZECH, s.r.o.**

**CZECHY / CZECH REPUBLIC**  
763 63 Halenkovice  
Halenkovice č.p. 10,  
tel. +420 608 180 668  
office@wiss.cz  
www.wiss.cz